

Press Release, 7 April 2009

Monthly traffic performance data – March 2009



Fall in demand weakened Finnair's average prices

Finnair traffic decline in March by 8 per cent compared with March last year. A weakening of demand reduced the average price per passenger kilometre by more than 13 per cent in the first quarter of 2009. Business travel in particular has fallen sharply.

“In these adverse economic conditions, Finnair must be ready to fight for customers and with demand being as it is, this has to be done with price. We have reacted to the fall in demand also by cutting capacity. This will take place mainly by reducing flight frequencies to our present destinations,” says Finnair's SVP Communications Christer Haglund.

This year Finnair's scheduled passenger traffic capacity is expected to be a good six per cent less than in 2008.

Weakened demand is also evident in load factors. Finnair's load factor in all traffic fell in March by 3.4 percentage points and in scheduled passenger traffic by 4.8 percentage points.

Asian traffic declined in March by 15.5 per cent, due mainly to cuts in capacity. Capacity was reduced on Asian routes by 12 per cent.

European traffic declined by 12.5 per cent and capacity was cut by 3.2 per cent. The Europe traffic load factor fell by 6.5 percentage points compared with March last year.

Leisure Traffic grew in March by 6.1 per cent. The load factor, however, fell by 2.2 percentage points as capacity increased by 8.7 per cent.

Of Finnair's flights, 88.0 per cent arrived on schedule, which represents an improvement of 17.9 percentage points from last year. The scheduled passenger traffic punctuality percentage rose from March last year by 18.0 percentage points to 90.9 per cent.

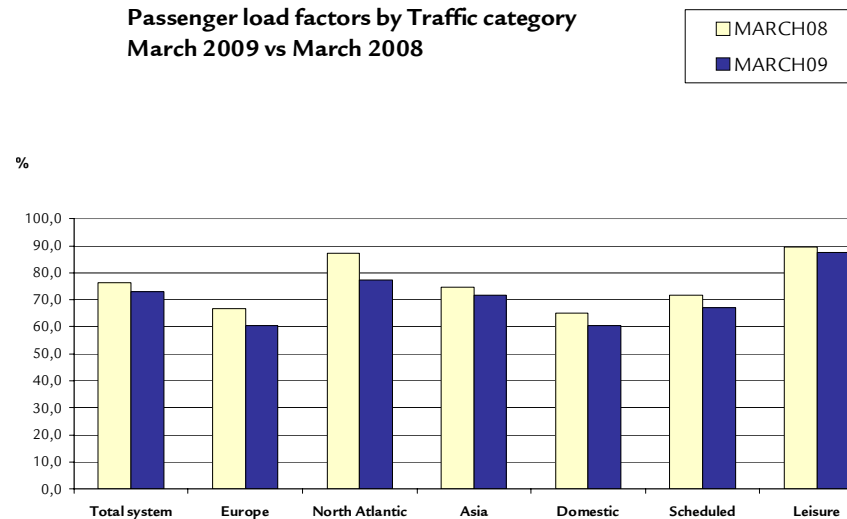
Finnair traffic

- **Finnair traffic** altogether decreased by 8.0%, measured in revenue passenger kilometres. Capacity decreased by 3.7%. Passenger load factor was 3.4 percentage points lower than year before, 72.9%. Number of passengers carried decreased by 10.2% and was 668 437.

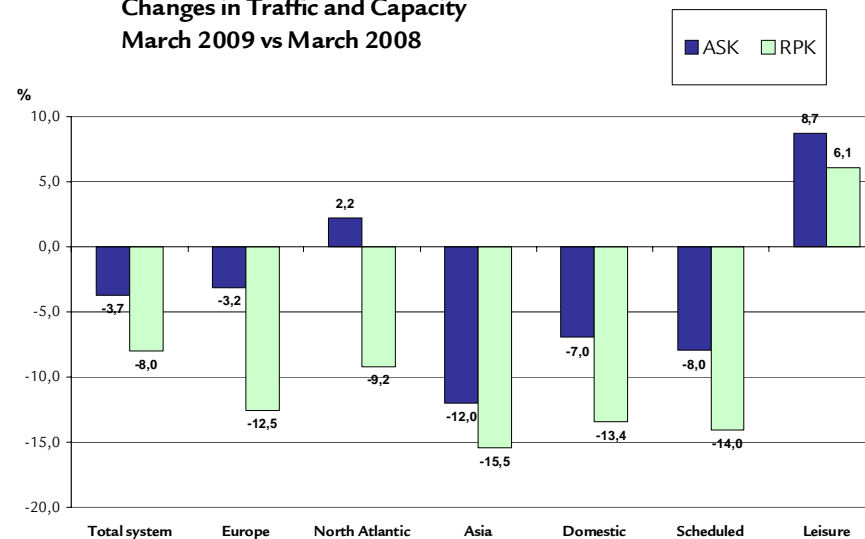
Scheduled traffic

- **Scheduled** traffic decreased by 14.0%, measured in revenue passenger kilometres. Capacity decreased by 8.0%. Passenger load factor was 4.8 percentage points lower than year before, 67.0%. Number of passengers carried decreased by 12.1% and was 544 332.
- **Scheduled international** traffic, decreased by 14.1%, measured in revenue passenger kilometres. Capacity decreased by 8.0%. Passenger load factor was 4.8 percentage points lower than year before, 67.6%. Number of passengers carried decreased by 13.7% and was 381 890.

Passenger load factors by Traffic category
March 2009 vs March 2008



Changes in Traffic and Capacity
March 2009 vs March 2008



Press Release, 7 April 2009

Monthly traffic performance data – March 2009



- ❑ **European** scheduled traffic, decreased by 12.5%, measured in revenue passenger kilometres. Capacity decreased by 3.2%. Passenger load factor was 6.5 percentage points lower than year before, 60.4%. Number of passengers carried decreased by 13.4% and was 280 415.
- ❑ **North Atlantic** scheduled traffic decreased by 9.2%, measured in revenue passenger kilometres. Capacity increased by 2.2%. Passenger load factor was 9.7 percentage points lower than year before, 77.4%. Number of passengers carried decreased by 9.2% and was 10 034.
- ❑ **Asian** scheduled traffic decreased by 15.5%, measured in revenue passenger kilometres. Capacity decreased by 12.0%. Passenger load factor was 2.9 percentage points lower than year before, 71.8%. Number of passengers carried decreased by 15.1% and was 91 441.
- **Domestic** scheduled traffic decreased by 13.4%, measured in revenue passenger kilometres. Capacity decreased by 7.0%. Passenger load factor was 4.5 percentage points lower than year before, 60.6%. Number of passengers carried decreased by 8.2% and was 162 442.

Leisure traffic

- **Leisure** traffic increased by 6.1%, measured in revenue passenger kilometres. Capacity increased by 8.7%. Passenger load factor was 2.2 percentage points lower than year before, 87.4%. Number of passengers carried decreased by 0.5% and was 124 105.

Cargo

- Cargo traffic decreased by 17.5% in terms of cargo tonnes carried.
- Decrease in scheduled traffic was 17.2%. Cargo traffic decreased by 22.1% in Asian traffic, decreased by 7.2% in European traffic and decreased by 19.6% in North-Atlantic traffic.
- Cargo traffic carried on chartered cargo flights decreased by 53.4%. The cargo load factor in the Asian traffic was 66.5% and in the North Atlantic traffic 60.8%.

TOTAL TRAFFIC	MAR09	MAR08	CHG %	JAN - MAR09	JAN - MAR08	CHG %
ASK (mill.)	2 536	2 633	-3,7	7 409	7 515	-1,4
RPK (mill.)	1 850	2 010	-8,0	5 624	5 626	0,0
Passenger load factor	72,9 %	76,4 %	-3,4 pu	75,9 %	74,9 %	1,1 pu
Nbr of passenger (000)	668,4	744,2	-10,2	1 890,1	2 022,8	-6,6

For further information, please, contact:

Mr. Lasse Heinonen. SVP & CFO. tel. +358 9 818 4950
 Mr. Christer Haglund. SVP Corporate Communications. tel. +358 9 818 4007
 Mr. Petteri Kostermäe. VP Traffic Planning. tel. +358 9 818 8504
 Mr. Timo Riihimäki. Vice President. Cargo. tel. +358 9 818 5487

Finnair Oyj
 Communications
 7 April 2009

ATTACHMENT: Finnair Traffic Performance March, Financial Year 2009

Next traffic statistics will be released on 7 May 2009

Finnair Group traffic performance March 09, Financial year 2009

The statistics include performance figures for Finnair .

	Mar 09	Change%	Jan 09 – Mar 09	Change%		Mar 09	Change%	Jan 09 – Mar 09	Change%
Total traffic					Domestic				
Passengers 1000	668,4	-10,2	1 890,1	-6,6	Passengers 1000	162,4	-8,2	412,0	-11,5
Available seat-kilometres mill	2 536,2	-3,7	7 408,8	-1,4	Available seat-kilometres mill	158,9	-7,0	413,7	-9,5
Revenue passenger kilometres mill	1 849,8	-8,0	5 624,3	0,0	Revenue passenger kilometres mill	96,3	-13,4	238,3	-13,9
Passenger load factor %	72,9	-3,4 p	75,9	1,1 p	Passenger load factor %	60,6	-4,5 p	57,6	-2,9 p
Cargo tonnes	7 561,6	-17,5	20 228,2	-19,6	Leisure traffic				
Available tonne-kilometres mill	373,5	-4,8	1 104,9	-1,3	Passengers 1000	124,1	-0,5	361,2	5,0
Revenue tonne-kilometres mill	207,2	-11,0	616,0	-4,7	Available seat-kilometres mill	734,7	8,7	2 141,4	12,0
Overall load factor %	55,5	-3,8 p	55,7	-2,0 p	Revenue passenger kilometres mill	642,5	6,1	1 963,3	10,6
Scheduled passenger traffic total					Passenger load factor %	87,4	0,0 p	91,7	0,0 p
Passengers 1000	544,3	-12,1	1 528,9	-8,9	Cargo Traffic				
Available seat-kilometres mill	1 801,5	-8,0	5 267,4	-6,0	Cargo scheduled traffic total tonnes	7 299,5	-17,2	19 491,1	-19,3
Revenue passenger kilometres mill	1 207,3	-14,0	3 661,0	-4,9	- Europe tones	1 699,9	-7,2	4 519,8	-15,7
Passenger load factor %	67,0	-4,8 p	69,5	0,8 p	- North Atlantic tones	464,9	-19,6	1 495,9	-4,3
Europe					- Asia tones	4 829,9	-22,1	12 711,1	-22,8
Passengers 1000	280,4	-13,4	789,9	-10,3	- Domestic tones	304,7	51,7	764,3	2,3
Available seat-kilometres mill	641,7	-3,2	1 821,4	-6,3	Cargo leisure traffic tonnes	116,2	229,0	342,6	219,8
Revenue passenger kilometres mill	387,4	-12,5	1 087,8	-8,4	Scheduled cargo charter tonnes	145,9	-53,4	394,5	-57,1
Passenger load factor %	60,4	-6,5 p	59,7	-1,3 p	Cargo tonnes total	7 561,6	-17,5	20 228,2	-19,6
North Atlantic					Available cargo tonnekilometres* mill.	78,4	-7,2	234,9	-2,9
Passengers 1000	10,0	-9,2	31,7	12,5	Revenue cargo tonnekilometres mill.	41,5	-21,3	111,8	-21,5
Available seat-kilometres mill	85,6	2,2	264,4	15,4	Cargo load factor* %	53,0	-9,5 p	47,6	-11,3 p
Revenue passenger kilometres mill	66,2	-9,2	209,4	12,5	<i>*Operational calculatory capacity</i>				
Passenger load factor %	77,4	-9,7 p	79,2	-2,1 p					
Asia									
Passengers 1000	91,4	-15,1	295,2	-3,0					
Available seat-kilometres mill	915,2	-12,0	2 767,9	-6,9					
Revenue passenger kilometres mill	657,4	-15,5	2 125,5	-3,4					
Passenger load factor %	71,8	-2,9 p	76,8	2,8 p					